

Student GIS CHALLENGE

2 Grand Prizes: \$1,000 cash, a trip to California for GIS Day, and \$35,000 Tuition Scholarship for Claremont Graduate University

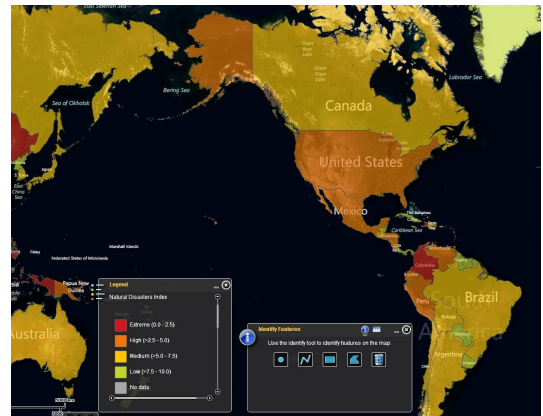
Claremont Graduate University (CGU) and Esri invite students and recent graduates to participate in this exciting opportunity to compete and showcase their work in GIS. Applicants to the GIS Challenge Contest must specify the Challenge Area that their research will address and must articulate how their proposed application and analysis would extend our understanding of Public Health and Humanitarian Issues or Transportation Safety.

Challenge Areas– 1 Grand prize in each category:

- Public Health and Humanitarian Issues
- Transportation Safety

Challenge Topics may include but are not limited to:

- Visualization
- Participatory Sensing
- Creating Alerts
- Building Qualitative Data/Narratives
- Transdisciplinary Analysis



Deadline for Submissions is 11:59pm Tuesday Nov 1st, 2011
Submit proposal to: gischallenge@cgu.edu

Eligibility

- Applicant must be eligible for undergraduate graduation by June, 2012 or have graduated after January 2010.
- For the CGU-School of Information Systems and Technology (SISAT) Tuition scholarship: applicant must meet the academic requirements for admission to CGU in general, and SISAT specifically. Please see SISAT requirements at <http://cgu.edu/sisat>.

For Registration and Full Submission Guidelines, go to <http://cgu.edu/gischallenge>.
Announcement Ceremony will be held on GIS DAY at CGU
on Wednesday, Nov. 16th, 2011.

Contest Sponsored by The School of Information Systems and Technology—Advanced GIS Lab,
Kay Family Foundation, & Esri

